



SONDEX

S17

Plate Heat Exchanger



Recommended Applications:

The **S17 Sondex** plate heat exchanger is specially designed for the HVAC area, heat recovery solutions, the food, general, industrial and chemical market.

Design Principle:

The **Sondex** type **S17** plate will cover many duties up to 60 m³/h in a single pass solution, meaning that all the connections are on the head side. This will ensure easy pipe- and service work, and by dismantling the exchanger for service, no pipes need to be removed.

The heat transfer is obtained, when the warmmedium transfers energy through the thin, strong flow plates between the channels and delivers it to the cold opposing medium without mixing the two media. Counter-current flow creates the optimal efficiency.

The plate- and inlet design allows an effective and easy CIP (Cleaning in Place) of all "flow" surfaces.

Flow plates:

The corrugated "herringbone" pattern ensures turbulent flow in the whole effective area. Furthermore, this pattern brings "metallic" contact between the plates, and together with locking devices on the gaskets, the plate pack is easily assembled.

The plate pack is held firm and safely between the fixed head and movable follower of the frame.

Data Required for Correct Quotation:

Duty, flow rate, type of media, temperatures, working pressure, pressure losses and thermodynamic properties determine the type of exchanger, size of heat surface and plate pattern.

Technical Information

Frame:

Painted frame with the clamping bolts placed around the frame edge.

Standard colour by painted frame: Blue RAL 5010.

Available in other colours.

Working pressure:

The frames are designed for a working pressure of 1.0 MPa / 1.6 MPa.

Intermediate Frame:

Intermediate frame and corner blocks for IS and FS frames in stainless steel.

Construction Standard:

According to PED 97/23/EC:

A-D "Merkblätter"

According to ASME CODE:

ASME VIII, DIV. 1

Connections:

DN 50 flanges.
Rubberlined or cladged, with AISI316.

According to all known standards. 2" pipe or threaded pipe, according to BSP-ISO7 and NPT, in stainless steel and titanium. 2½"/DN65 dairy union According to all known standards.

Plates:

Standard material: AISI 316 and titanium.
Also 2 x 0.4mm "Sonder Safe" plates for food & industry.
Not standard: 254 SMO, hastelloy C 276 and other pressable materials.

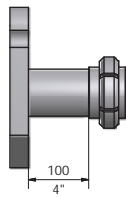
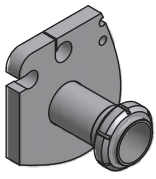
Gaskets:

The gasket is the unique "Sonder Lock", non-glued type.
Standard material: Nitrile and EPDM. Not standard is viton.

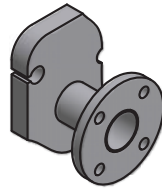
Extra Equipment:

Safety cover in stainless steel
Insulating jacket.
Assembling spanner.
Foundation feet for frame.

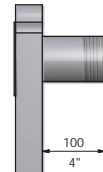
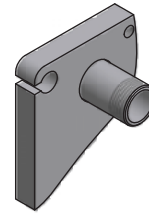
CONNECTIONS:



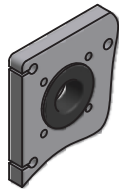
DAIRY UNION



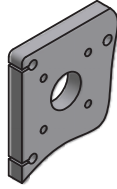
FLANGE ON PIPE



THREADED PIPE

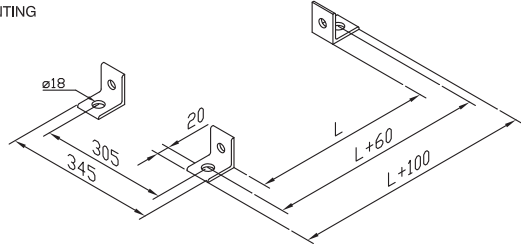


PAINTED / CLADED

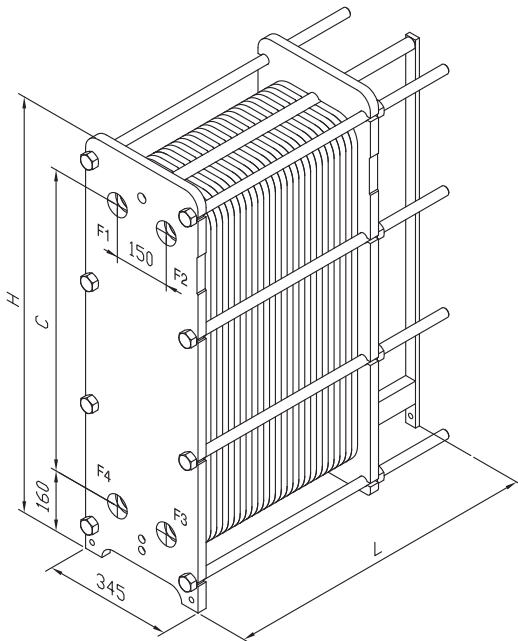


PAINTED

MOUNTING



FRAME



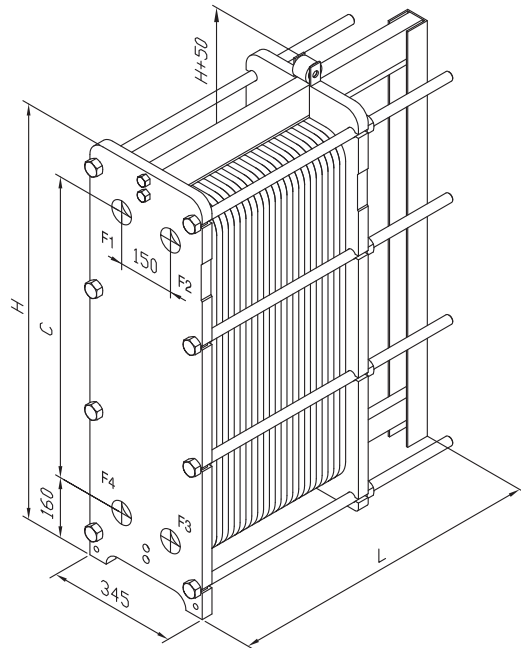
SUBJECT TO CHANGE IN CONSTRUCTION CONDITIONS

FRAME SIZE	DIMENSION H	DIMENSION C
S17	1105	800

PLATE HEAT EXCHANGER GROUP:

S17 - IG

FRAME



SUBJECT TO CHANGE IN CONSTRUCTION CONDITIONS

FRAME SIZE	DIMENSION H	DIMENSION C
S17	1105	800

PLATE HEAT EXCHANGER GROUP:

S17 - IS



SONDEX A/S · JERNET 9 · DK-6000 KOLDING · DENMARK

SONDEX

Phone +45 76 30 61 00 • Telefax +45 75 53 89 68 / +45 75 50 50 19 • E-mail: info@sondex.dk

The manufacturer reserves the right to change the specifications in force at any time.